

Music Mood Classification Using Audio and Lyrics

MARCEL THADEU DE ABREU E SOUZA

ADVISER: ALESSANDRO LAMEIRAS KOERICH

Introduction

- ▶ Objective: classify songs based on its mood.
- ▶ Music is one of the most popular media.
- ▶ People can select songs to listen according to their mood.

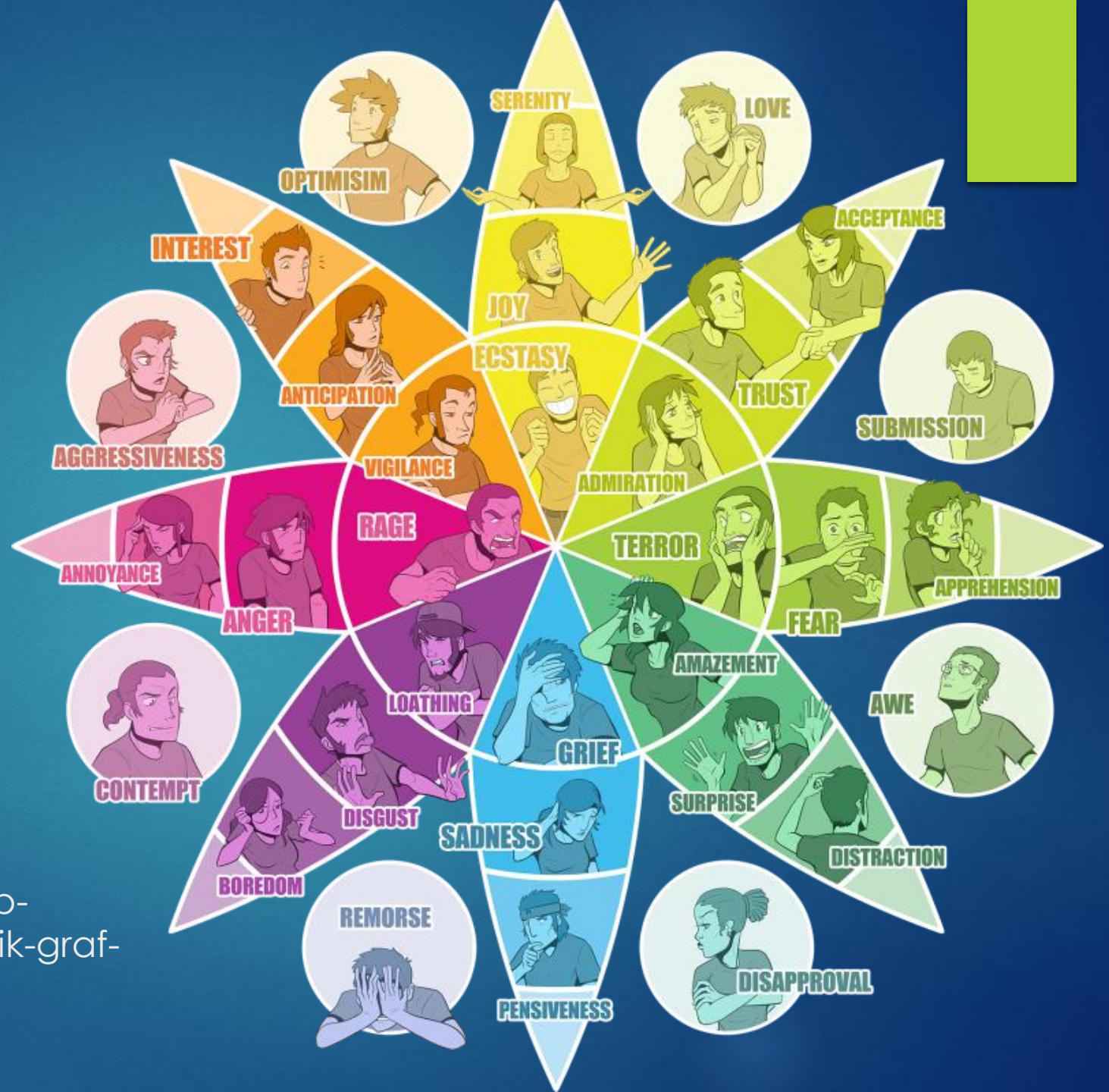
Feelings x Emotions



Feelings	Emotions
Feelings tell us “ how to live ”.	Emotions tell us what we “ like ” and “ dislike ”.
Feelings are Low-key but Sustainable .	Emotions are Intense but Temporary .
Happiness : is a feeling.	Joy : is an emotion.
Worry : is a feeling.	Fear : is an emotion.
Contentment : is a feeling.	Enthusiasm : is an emotion.
Bitterness : is a feeling.	Anger : is an emotion.
Love : is a feeling.	Lust : is an emotion.
Depression : is a feeling.	Sadness : is an emotion.

Source: <https://www.authentic-systems.com/featured-articles/difference-between-emotions-and-feelings/>

Plutchik's Model of Emotions



Source: <http://dinergicfit.com/wp-content/uploads/2013/12/Plutchik-graf-pequeno..png>

ANEW

- ▶ The Affective Norms for English Words (ANEW) provides a set of emotional ratings for a large number of words in English.
- ▶ Focused in studies of emotion and attention.

Reference: <http://csea.phhp.ufl.edu/media/anewmessage.html>

Million Song Dataset (MSD)

- ▶ Dataset of audio features and metadata for a million contemporary popular music tracks.

Reference: <http://labrosa.ee.columbia.edu/millionsong/>

The musiXmatch Dataset

- ▶ Official lyrics collection of the Million Song Dataset.
- ▶ 237,662 tracks
- ▶ It contains a list of top words and the number of times each word appears in each song.

Reference: <http://labrosa.ee.columbia.edu/millionsong/musixmatch>

The Last.fm Dataset

- ▶ Official song tag and song similarity dataset of the Million Song Dataset.
- ▶ It provides tags for some of the MSD songs.

Reference: <http://labrosa.ee.columbia.edu/millionsong/lastfm>

Research

- ▶ Main focus: Portuguese songs
- ▶ MSD: acoustic attributes
- ▶ musixmatch: lyrics
- ▶ Last.fm: tags

Research

